






VentureX Fund

SME Focused CAT 1 AIF

SEBI Registration No.:IN/AIF1/24-25/1565

Product Differentiation

 PMS 50 LAC Minimum Investment	 AIF 1 CRORE Minimum Investment	 MF 500 RUPEES Minimum Investment
<p>Share Purchase</p> <ul style="list-style-type: none"> ✓ Secondary Sales ✗ Mainboard IPO as Anchor Investor ✗ SME IPO as Anchor Investor ✗ Pre-IPO 	<p>Share Purchase</p> <ul style="list-style-type: none"> ✓ Secondary Sales ✓ Mainboard IPO as Anchor Investor ✓ SME IPO as Anchor Investor ✓ Pre-IPO 	<p>Share Purchase</p> <ul style="list-style-type: none"> ✓ Secondary Sales ✓ Mainboard IPO as Anchor Investor ✗ SME IPO as Anchor Investor ✗ Pre-IPO
<p>AMC Contribution</p> <p>Zero</p>	<p>AMC Contribution</p> <p>Minimum 5 Crores/ Scheme</p>	<p>AMC Contribution</p> <p>Minimum 50 Lac/ Scheme</p>

AIF Category Wise Returns

Traditional Investments vs Beyond Traditional Investments: Where has real wealth been created

Category I Returns

AIF Category I	5-Year Returns
Venture Capital	24 - 40%
SME Funds	36 - 60%
Angel Funds	16 - 22%
Special Situation Funds	18 - 25%
Social Venture Funds	10 - 15%

Category II Returns

AIF Category II	5-Year Returns
Private Equity	15 - 22%
Debt Funds	12 - 18%
Real Estate	15 - 20%
Funds of Funds	12 - 18%

Category III Returns

AIF Category III	5-Year Returns
Long-only Equity Funds	18 - 35%
Hedge Funds	12 - 20%
Quant Funds	12 - 18%
PIPE Funds	15-20%

SME IPOs, at their best, have outperformed every traditional asset class by a significant margin. A well-selected SME IPO portfolio would have delivered 3-5x returns in two to three years, something gold, real estate, or even the Nifty couldn't replicate.

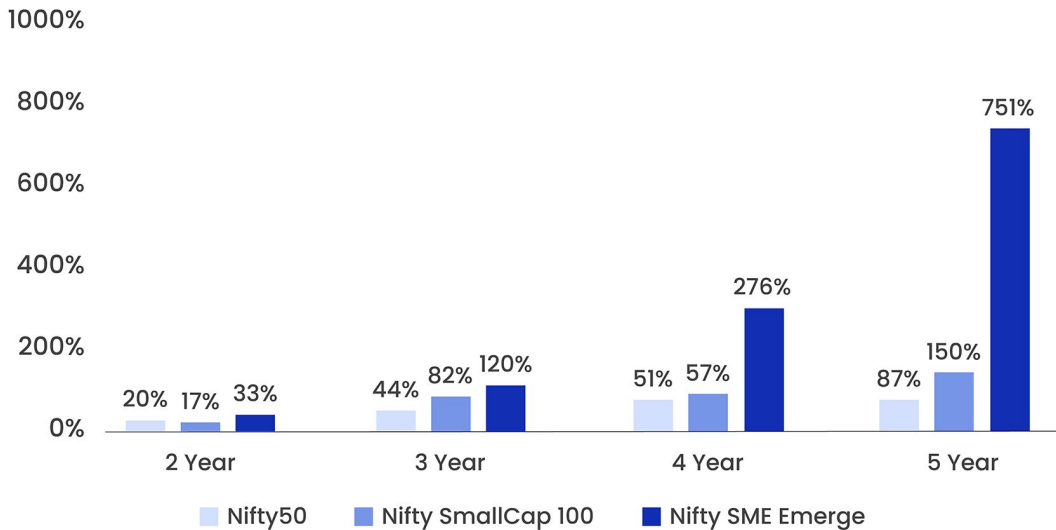
SME

Your Hidden Alpha Advantage

Analysis of both absolute returns and Compound Annual Growth Rates (CAGR) over a 6-year period, demonstrates a compelling trend: Small and Mid-sized Enterprises (SMEs) have consistently surpassed the performance of established benchmarks like the Nifty 50 and the Nifty Small Cap 100.

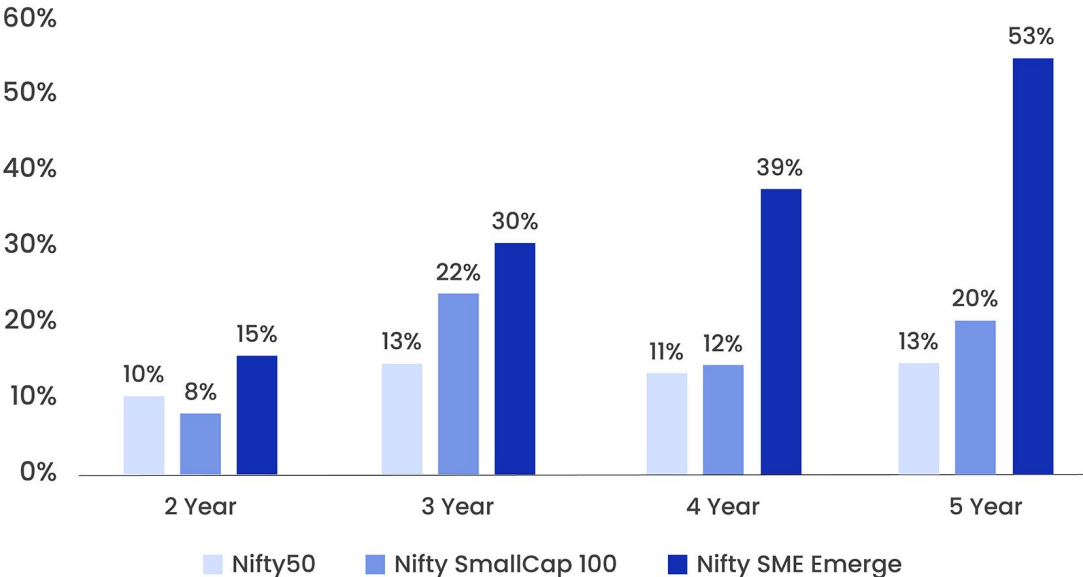
This superior performance translates into positive alpha, a key metric indicating an investment's ability to generate returns that exceed those of the broader market. In simpler terms, by investing in SMEs, shareholders have enjoyed significant returns that outperform the market average.

Comparison of Absolute Gains *



BSE SME index has generated a **68.3 Cr. Absolute** return over the past five years.

Comparison of CAGR Gains *

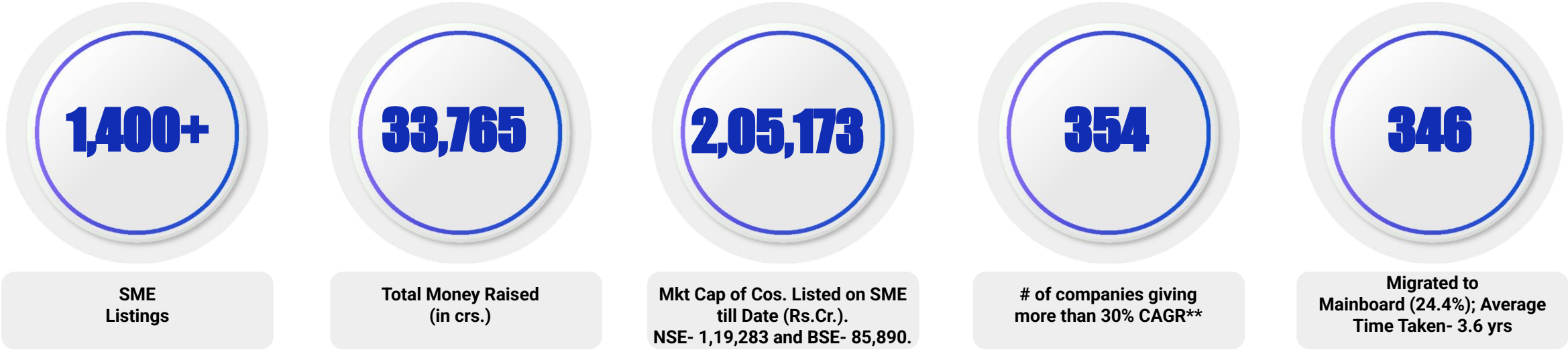


BSE SME index has generated a **133% CAGR** return over the past five years.

* Data Source: NSE, Data till Dec 2025

Small Giants

How SMEs are Crushing the Market



Largest Wealth Creators : Top 5 SMEs by Absolute Gains

	Listing Date	Issue Price (₹)*	Current Price (₹)	Holding Period (Years)	Absolute Returns	CAGR Returns
D.P. Abhushan Ltd	23 Oct 2017	34	1,482	8.2	53x	62%
Knowledge Marine & Engineering Works Ltd.	22 Mar 2021	38	1,762	4.8	48x	124%
Concord Control Systems Ltd.	10 Oct 2022	55	2,639	3.2	48x	230%
Waaree Renewable Technologies Ltd.	09 Aug 2012	22	932	13.4	42x	32%
Nintec Systems Ltd.	18 Apr 2016	10	395	9.8	39x	46%

*Adjusted for Splits, Data Source: Chittorgarh, Dec End 2025, **Listed between CY 2012-2025

How India's SMEs Turned into Multibaggers?

Companies	Year of Listing	IPO Listing Price/Share* (₹)	CMP/Share** (₹)	Tenure (Years)	Growth (Times)
Eicher Motors	1992	1.22	7,567	33	6,202x
Asian Paints	1982	1.45	2,779	43	1,917x
HDFC Bank	1995	0.5	946	30	1893x
Reliance Industries	1977	1	1,471	48	1,472x
Divis Lab	2003	7	6,617	22	945x
Infosys	1995	6	1,613	30	269x
Maruti	2003	125	16,629	22	133x
Page Industries	2007	395	34,910	18	88x

Maruti Suzuki India

	Market Cap (in ₹ Cr.)	Tenure (In Years)	Multiple	CAGR
IPO in 2003	3,600	-		-
2009	45,072	6	13x	52%
2025*	5,22,938	16	12x	17%

Page Industries

	Market Cap (in ₹ Cr.)	Tenure (In Years)	Multiple	CAGR
IPO in 2007	401	-		-
2014	13,090	7	33x	65%
2025*	38,873	11	3x	10%

Divis Laboratories

	Market Cap (in ₹ Cr.)	Tenure (In Years)	Multiple	CAGR
IPO in 2003	140	-		-
2012	14,000	9	100x	67%
2025*	1,75,116	13	13x	21%

Divis Laboratories

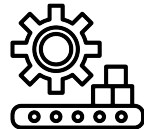
	Market Cap (in ₹ Cr.)	Tenure (In Years)	Multiple	CAGR
IPO in 2003	140	-		-
2008	8400	5	60x	127%
2025*	1,75,116	17	21x	20%

Contribution of SMEs & Microcaps in India's Economy



GDP

30%



Manufacturing

36%



Exports

44%

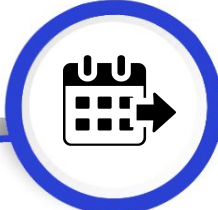


Employment

120


Million

Government Initiatives Propel SMEs Toward Future Growth Titans




Improved Cashflow

Section 43B(h) ensures payment to SME suppliers within 45 days



Ease of Credit

₹ 5 lakh Cr through (ECLGS)
₹ 50,000 crore equity infusion through SME Self-Reliant India Fund.



Policy Drive

Make in India, ODOP, PLI and other schemes to benefit SME growth

For us, MSME means- Maximum Support to Micro Small and Medium Enterprises

- Narendra Modi, PM



MSME

MICRO, SMALL & MEDIUM ENTERPRISES

सूक्ष्म, लघु एवं मध्यम उद्यम

OUR STRENGTH • हमारी शक्ति

Ministry of MSME, Govt. of India

Investment Committee



Mr. Rajesh Singla

Fund Manager & CEO

Rajesh Singla is one of the Fund Managers of VentureX, managing ₹250 cr. of AUM in their flagship VentureX fund, bringing over 7 years of specialized experience in finance and capital markets with a strong focus on early to growth-stage SME investments. He drives investment strategy, portfolio management, and long-term value creation across key sectors including consumer discretionary, technology, chemicals, and manufacturing. His certifications across NISM modules in Alternative Investment Funds (Category I, II & III) - AIF Managers highlight his commitment to compliance and governance of the highest standards.

Rajesh has led and structured equity fundraises across Pre-Seed to Series A stages, successfully channeling capital from domestic and international investors into high-growth ventures. Over the years, he has facilitated ₹50 Cr+ in primary capital raised and enabled ₹500 Cr+ worth of secondary transactions in marquee Pre-IPO, SME and unicorns, underscoring his strong network with HNIs, family offices, and institutional investors.

In addition to his finance expertise, Rajesh holds Bachelor in Technology & leverages over a decade of leadership experience at global technology companies like Accenture, Amazon, Snapdeal etc., combining technical acumen with strategic insight to identify and back transformative businesses.

Investment Committee



Ishima Singla

Chief Investment Officer & Fund Manager

Ishima Singla, CFA Level 1 and MBA (Finance & Accounting), is a finance professional with 14+ years of expertise in private equity valuation, investment due diligence, and financial analysis. As Chief Investment Officer at VentureX, she leads the financial analyst team, evaluating SMEs and identifying hidden opportunities in the private markets. She has conducted due diligence on over 2,500 SMEs/Mainboard companies and actively mentored entrepreneurs at leading institutions including IIT Kanpur, IIT Delhi, IIM Lucknow, and GIMs, sharing insights on fundraising and scaling businesses.

Earlier, Ishima spent a decade at Ernst & Young, advancing to Associate Manager, where she specialized in business valuation, purchase price allocation, and financial statement analysis across global mandates. With international exposure, strong analytical depth, and leadership in unlisted markets, Ishima combines technical expertise with strategic vision to deliver consistent value creation.



Maneesh Nath

Portfolio Manager & Fund Manager

Maneesh Nath is a seasoned fund and portfolio manager with 20+ years of expertise in equity research, portfolio management, and value investing. As Portfolio Manager at VentureX, he oversees company and stock analysis, evaluating SMEs and uncovering high-potential opportunities in private markets.

Recognized globally as the #1 fund manager in his category on Preqin, he has consistently delivered superior, risk-adjusted returns. At Arcstone Capital, Maneesh managed the Passage to India Opportunity Fund (PTIOF), a globally top-ranked small-cap & micro cap hedge fund.

Stocks	Returns (From 2013)
Jyoti Resin	300x
Astral Pipes	200x
Refex Industries	200x
Waaree Renewable	40X

Annualised Returns of **53% vs 13%** for benchmark

Refer: <https://www.crescat.net/wp-content/uploads/Preqin-top-2014-hedge-funds.pdf>

Research Analyst



Attender Singh

AVP, FDD

Qualification:

B.Com (Hons.), CFE (ACFE-USA)

Experience:

14+ Years Experience, Earlier with Netrika for Forensic Due Diligence



Apaar Bansal

Sr. Financial Analyst

Qualification:

CA

Experience:

7+ Years

Sector:

Chemicals



Chinmay Bhandari

Financial Analyst

Qualification:

B.Tech

Experience:

4+ Years

Sector:

Defence, Infrastructure



Advaitya Chandhoke

Financial Analyst

Qualification:

BBA (General)

Experience:

3+ Years

Sector:

Defence, Infrastructure



Prakash Pandey

Financial Analyst

Qualification:

CFA L2

Experience:

2+ Years

Sector:

Healthcare



Mahak Jain

Financial Analyst

Qualification:

B.Com. (Hons.)

Experience:

2+ Years

Sector:

Metals, Consumer Staples

Research Analyst



Ravinderbir Singh

Financial Analyst

Qualification:

B.Com.

Experience:

2+ Years

Sector:

Banks & NBFCs



Anmol Garg

Financial Analyst

Qualification:

B.Com., CFA L3

Experience:

2+ Years

Sector:

Consumer Discretionary



Jasleen Kaur

Financial Analyst

Qualification:

BBE, CFA L2

Experience:

1+ Years

Sector:

Renewable Energy

Product Specialist



Deepanshu

Sr. Investment and Product Specialist

Qualification:

CFA L2

Experience:

3+ Years



Tarun Bhandari

Sr. Wealth Manager

Qualification:

BBA, NISM XV
(Research Analyst)

Experience:

4+ Years



Shubham Kumar

Sr. Investment and Product Specialist

Qualification:

CFA Charterholder

Experience:

3+ Years

Sales Team



Makesu R

Zonal Head South

Qualification:

B.Com

Experience:

22+ Years

Location:

Chennai



Navneet Bagga

Regional Head

Qualification:

B.Com

Experience:

18+ Years Experience with Nippon India Mutual Fund

Location:

Ludhiana



Pranab Das

Zonal Manager East

Qualification:

MBA

Experience:

15+ Years

Location:

Kolkata



Praveen Kumar

Sr. Relationship Manager

Qualification:

MBA Marketing & Finance

Experience:

12+ Years

Location:

Lucknow



Jatin Sharma

Investment Banker

Qualification:

B.Tech

Experience:

10+ Years

Location:

Gurugram



Anand Raj

Branch Head

Qualification:

PGDM Marketing

Experience:

9+ Years

Location:

Pune

Sales Team



Divya Singh

Sr. Manager (Buy Side-Partners)

Qualification:
MBA (Finance)

Experience:
16+ Years

Location:
Gurugram



Mohit Rai

Investment Banker

Qualification:
MBA (Finance)

Experience:
5+ Years

Location:
Gurugram



Anmol Pandey

Relationship Manager

Qualification:
BMS

Experience:
3+ Years

Location:
Mumbai

HRM and Finance



Sheetal Goel

AVP - HRM

Qualification:
MBA - HR

Experience:
15+ Years



Sneha Gautam

Manager - HRM

Qualification:
PGDHRD, M.Com

Experience:
11+ Years



Shree Gupta

Manager, Finance

Qualification:
MBA (Finance)

Experience:
10+ Years

Market Cap – wise Company Breakdown

Market Cap (in ₹ Cr.)	No. of Companies	Market Cap Category	Total Companies
> 10,00,000	5	Large Cap	50
> 1,75,000	50		
> 1,00,000	100	Mid cap	250
> 25,000	300		
> 20,000 & < 25,000	53	Small cap	500
> 10,000 & < 20,000	208		
> 5,000 & < 10,000	229		
> 2,500 & < 5,000	291	Micro Cap	1000
> 1,000 & < 2,500	706		
We don't chase every opportunity – instead, our fund zeroes in on a defined set of companies where conviction meets scalability			
> 500 & < 1,000	388	SME	3600
< 500	3210		

Our Investment Approach



WHAT TO BUY?

We start by building a strong thesis around a company using our proprietary LMVT framework. This framework allows us to identify businesses with solid fundamentals, scalable models, and a clear path to long-term value creation.



WHEN TO BUY?

Timing is critical, and we strive to enter as early as possible, often at the pre-IPO or IPO stage. This ensures we position ourselves at the beginning of a company's growth curve, maximizing the potential for returns as the business scales.



HOW MUCH TO BUY?

Our investment process begins with a rigorous thesis-building exercise, anchored in our proprietary LMVT framework. This framework enables us to screen and evaluate SMEs on parameters such as financial strength, scalability of operations, governance standards, and industry positioning.



WHEN TO EXIT?

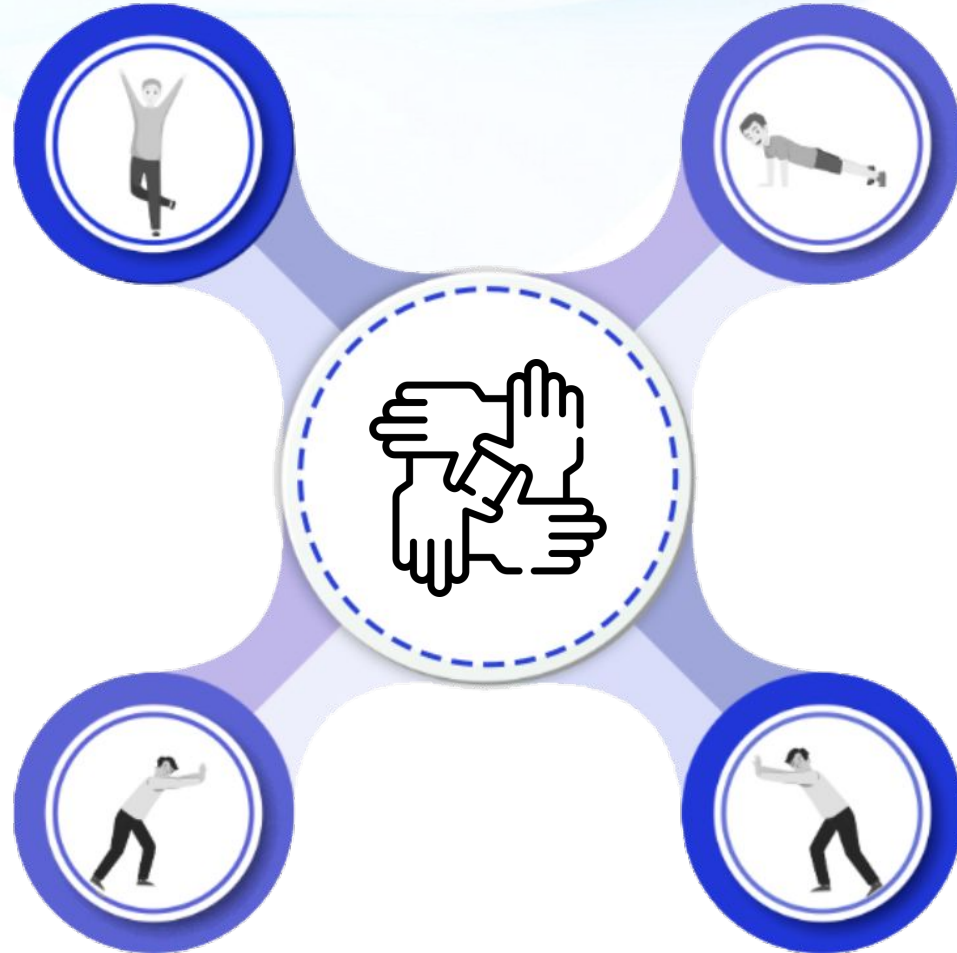
Our exit strategy is guided by clear principles. We step away when growth expectations are not met, when valuations become unreasonably high, or when corporate governance issues arise. These criteria help us preserve capital and maintain discipline in our investment decisions.

Investment Framework

LMVT

Leadership

- History of Strong Execution
- Demonstrated Business Acumen coupled with Entrepreneurial Spirit
- High Promoter Holding
- Relevant Experience and Track Record of Management



Moat

- Presence of High Pricing Power
- Product as the 'Moat'
- Economies of Scale, Licenses, and Patents
- Robust Business Model, Industry Landscape Disruptor

Valuation/Value Drivers

- Attractive Value Counters using PE, PEG & EV/EBITDA Framework
- Margin of Safety in Investment
- 5 year average D/E < 1
- Consistent Shareholder Wealth Creation

Following Tailwinds

- Positioned in high-growth sectors with government policy push
- Focused on disruptive technologies, green energy and AI
- Ready to scale in evolving markets

How we approach Investment Opportunities

Parameter



Leadership & Vision



Earnings Driven Approach



Sectoral Tailwinds



Due Diligence



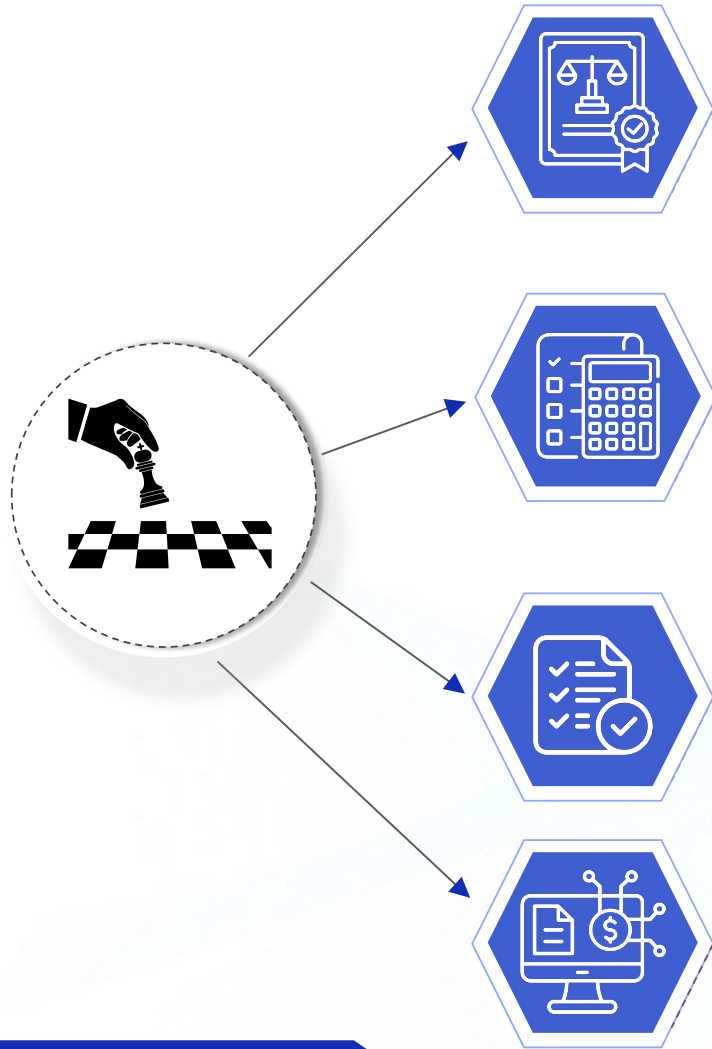
Exit Visibility

Particulars	Early (PreIPO) Stage	Later (Post IPO) Stage
Attractive market opportunity	✓	✓
Right to Win	✓	✓
Intellectual Property	✓	✓
Complex problem solving	✓	✓
Brand & Distribution	✓	✓
Cost Leadership	✓	✓
Ability to withstand Downturns	✓	✓
Ability to build Adjacencies	✓	✓
Large TAM	✓	✓
Favourable Industry Tailwinds	✓	✓
Multiple Growth levers	✓	✓
Strong Management Team	✓	✓
Strong Balance Sheet & Cash Flows	✓	✓

Board Representation	Strong Preference	Desirable
Exit Routes	SME Migration Mainboard	Overvalued
Desired holding Period	4-7 years	3-5 years

A Forensic Approach to SME Screening

LFOT



1. Legal, Governance & Compliance Checks

- Litigation status & regulatory notices
- Corporate governance strength (board, audit, disclosures)
- Auditor track record & auditor rotation history
- Promoter integrity, credit history & pledge checks
- ESG & statutory compliance review
- Key-man & succession depth

2. Financial & Accounting Forensics

Quantitative

- Revenue growth < profit growth
- Operating cash flow < accounting profits
- Expense capitalization to inflate earnings
- Sharp fall in tax rate without justification
- Extraordinary items / misc. expenses recurring
- Non-recurring income / channel stuffing signals

Qualitative

- Goodwill/revaluation reserves unusually high
- Receivables & inventory rising faster than revenue
- High leverage, falling DSCR/ICR
- Large related-party transactions
- Non-core investments; contingent liabilities

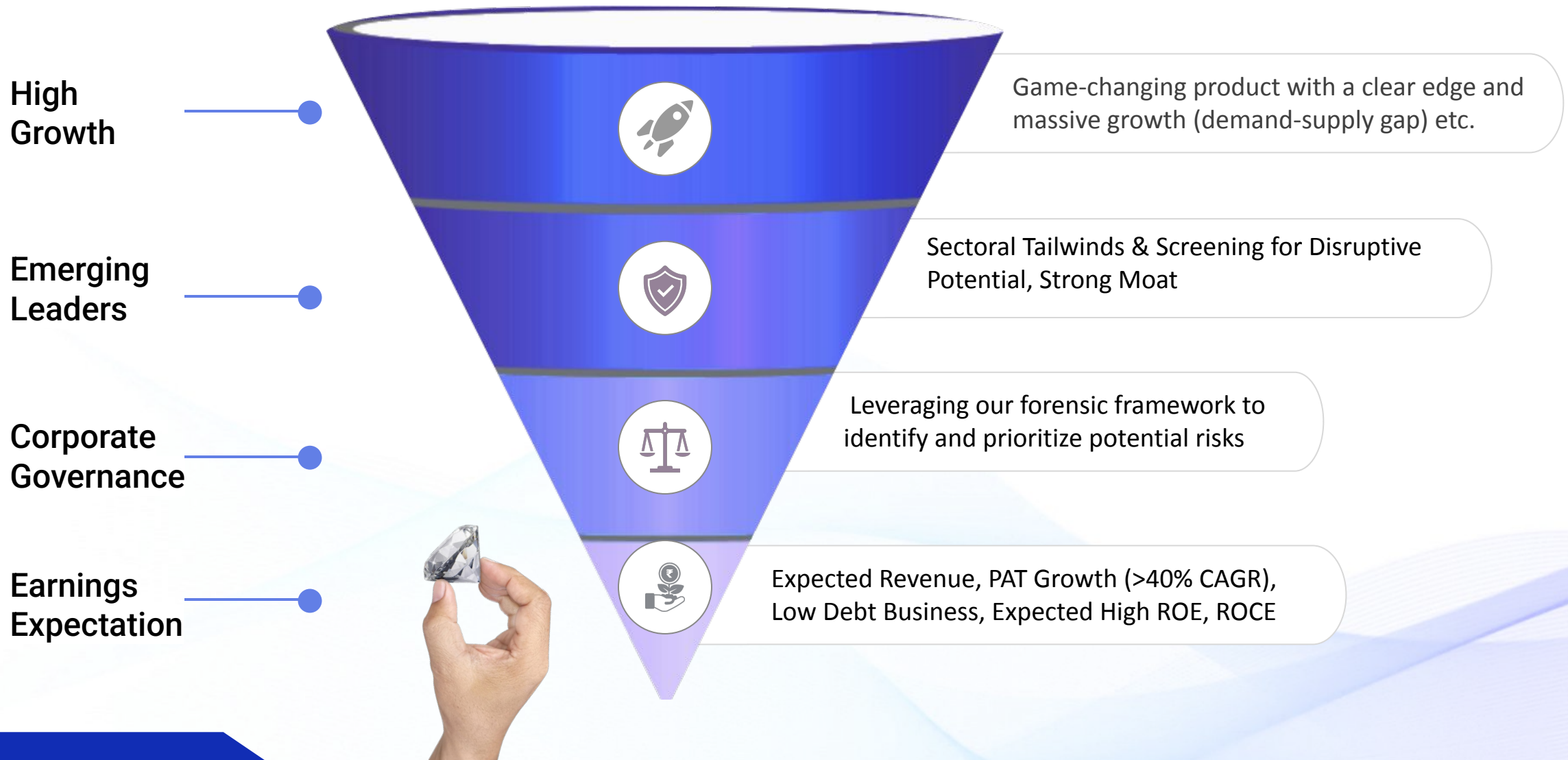
3. On-Ground & Business Reality Check

- Scuttlebutt: customer, vendor, employee feedback
- Factory/office visits every 6–9 months
- Capacity utilization & inventory verification
- Market validation – demand, pricing power, competition
- Promoter reputation & background checks
- Channel checks for revenue authenticity

4. Technology & Competitive Moat Validation

- Patents/IP ownership & defensibility
- In-house R&D capability & spend discipline
- Order book, LOIs & execution visibility
- Tech adoption & automation level
- Scalability & entry-barrier assessment

Strategic Approach to Identify High-Potential SMEs



By combining a game-changing product analysis, risk mitigation strategies, and superior growth expectations, this approach selects high-potential SMEs poised to outperform.

Asset Allocation & Progressive Risk Management



Asset Allocation

- The portfolio strategy involves an average allocation of 0.5% to 2% per company, primarily through pre-IPO investments on the main board. This approach ensures diversification across approximately 100 companies within the portfolio.



Sector Diversification

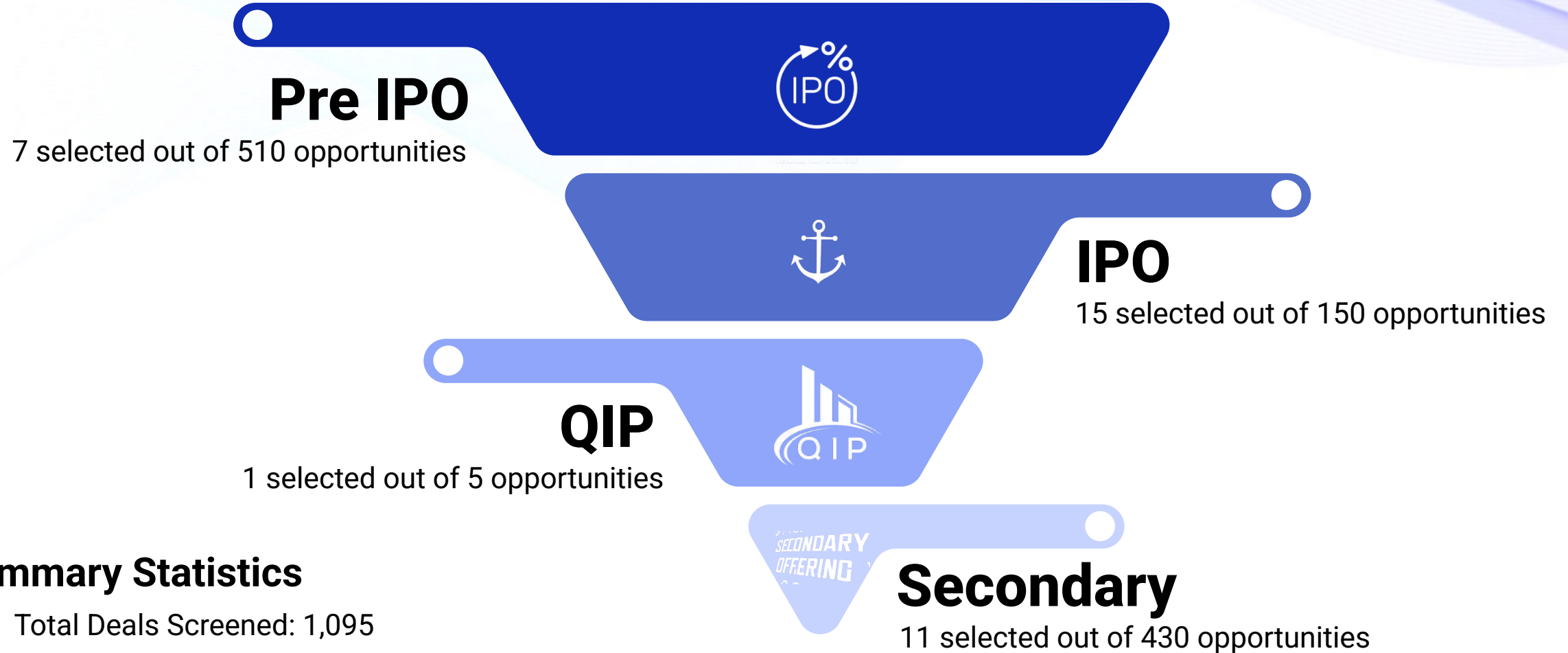
- The portfolio will be diversified across sectors, but exits wouldn't be dictated by percentage weight. Even if a position grows to 20% of the portfolio, we shall retain it as long as it meets investment criteria. For example, a pre-IPO investment in a high-growth sector will be held until its value proposition changes, prioritizing long-term gains over rebalancing.



Risk Management

- Volatility Management through VAR Framework.
- Scenario Analysis
- Liquidity Management (Dry Powder) & War Chest Fund

Deal Sourcing Overview



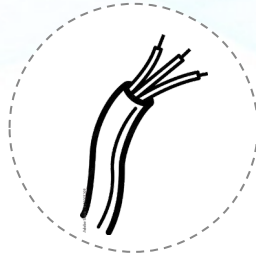
Summary Statistics

- Total Deals Screened: 1,095
- Total Deals Selected: 34
- Selection Rate: 3.10%

Investments in SMEs - VentureX SME Fund

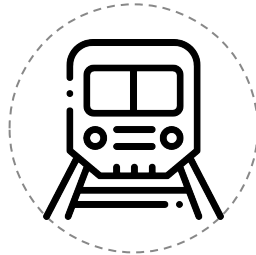
Company

Investment Rationale



JD Cables Ltd.

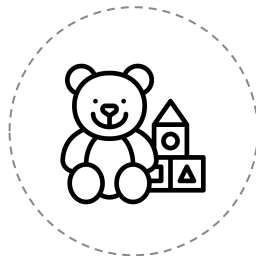
- ✓ ISO-Certified, Scalable Manufacturing Setup
- ✓ Empanelled with Multiple State Electricity Boards
- ✓ Government-Driven Demand and Market Penetration
- ✓ Diversified Client Base



MV ELECTROSYSTEMS LTD.

MV Electro Systems Ltd.

- ✓ Large Confirmed Order Book
- ✓ Scalable, Capex-Efficient Infrastructure
- ✓ Experienced Technical Leadership
- ✓ Global Quality Certification



K V Toys India Ltd.

- ✓ Asset-light model via partnerships
- ✓ Own Indian Brand establishment with a diversified portfolio
- ✓ Government tailwinds and higher import duties
- ✓ BIS-compliant with multi-level distribution

Investments in SMEs - VentureX SME Fund

Company

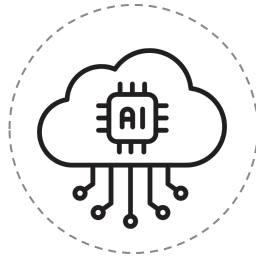
Investment Rationale



Accent Microcell Ltd

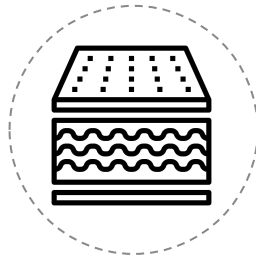
- ✓ Key MCC player in a global oligopolistic market
- ✓ Structural demand tailwind with supply constraints
- ✓ Strong fundamentals and disciplined capital allocation
- ✓ Highly experienced, sharp and strong management

InfoBay.AI



InfoBay AI Ltd

- ✓ Build domain-specific datasets to boost accuracy & reduce hallucinations
- ✓ End-to-end AI training: pre-training, SFT, and RLHF
- ✓ Direct partnerships with tech giants like Microsoft and Google
- ✓ Backed by marquee investors already on the cap table



SARVA FOAM
COMMITMENT THROUGH QUALITY

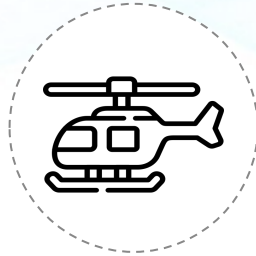
Sarva Foam Industries Ltd

- ✓ Dominant player with ~40% share in rebonded PU foam segment
- ✓ Industry-dominating clients with strong cash conversion cycle (~60 days)
- ✓ Sharp margin expansion (~1% In FY23 to ~10% in FY25)
- ✓ Expanding global footprints, including the UK & Australia

Investments in SMEs - VentureX SME Fund

Company

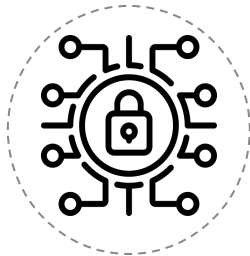
Investment Rationale



Sky One Airways Pvt Ltd

- ✓ No direct competition; Pawan Hans has filed for bankruptcy appeal
- ✓ Expanding into offshore O&G (AW139) and VIP/state (H145)

- ✓ Operates 5 helicopters, including one of India's largest Mil Mi-172 helicopters
- ✓ Strategic PSU/OEM partnerships, trusted by VVIPs



Workmates Core2Cloud Solution Ltd

- ✓ Asset-light and scalable model
- ✓ Proven revenue growth

- ✓ Highly Experienced Leadership
- ✓ Strong Global Partnerships



Di Aero Pvt Ltd

- ✓ PAC-certified company, enabling direct MoD order negotiations
- ✓ Combat-proven platforms, including Operation Sindoor (2025)

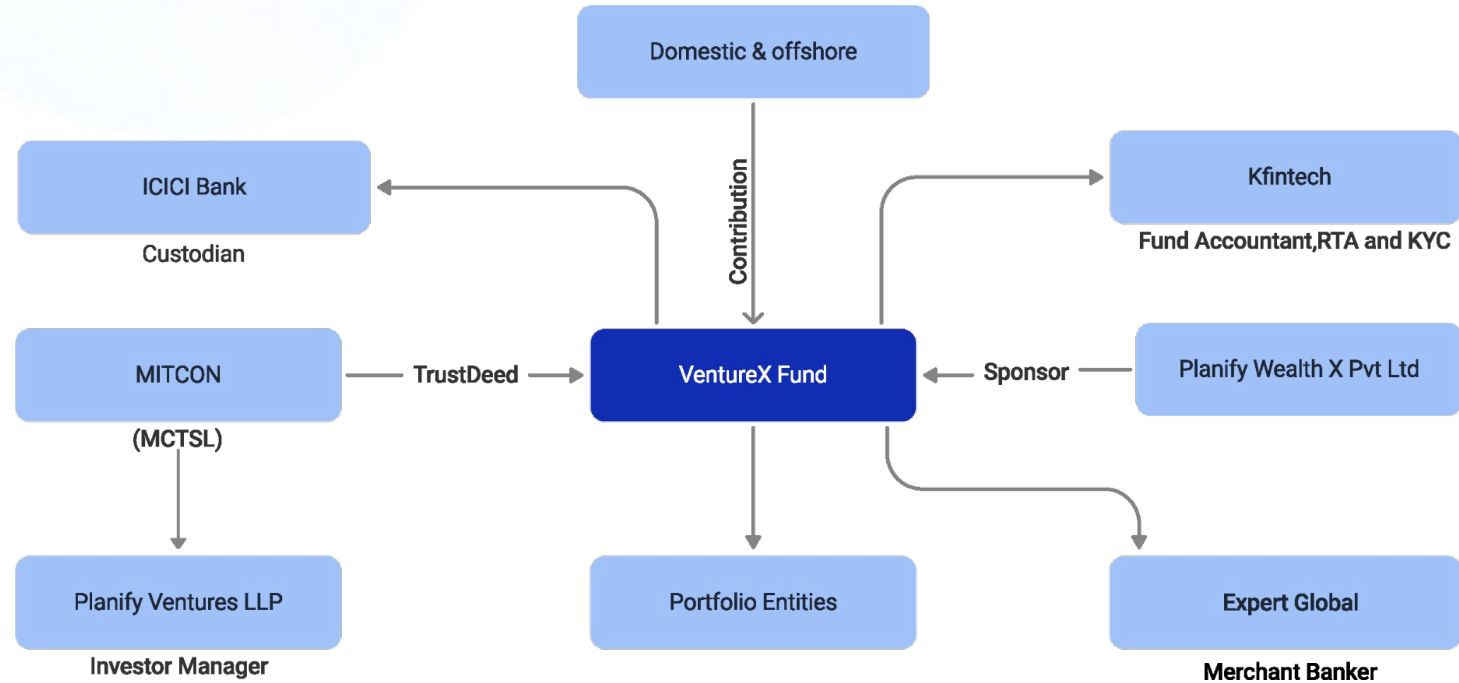
- ✓ Robust order book of ₹667 Cr. ensuring long-term visibility
- ✓ Belarusian founders; India ops led by Wg Cdr Rakesh Madhra (Retd.)

Key Terms

VentureX Fund

Name of the Fund/Scheme	VentureX Fund I
Proposed Size of the Fund	250 Crores
Size of the Green Shoe (Optional)	250 Crores
Tenure of the Fund	10 + 2 Years
First Closing of the fund	February 28, 2025
Final Closing of the fund	60 Months From the First Closing
Investor Commitment Period or Drawdown Period	10% of the commitment amount in every qtr for 10 quarters.
Exit	Distribution Waterfall: When a company profit is booked from portfolio companies and needs to be distributed to all Contributors
Sponsor Capital Commitment	2.5% of Corpus or 5 Cr. whichever is lower
Fund Investment Theme	SME (Anchor Investor in IPO, Pre-IPO of SME, listed SMEs from the Exchange)
Proposed investment by Sponsor/ Investment	Close Ended, Long-Only Cat-1, Alternative Investment Fund

Investors



Timelines



Key Terms

VentureX Fund

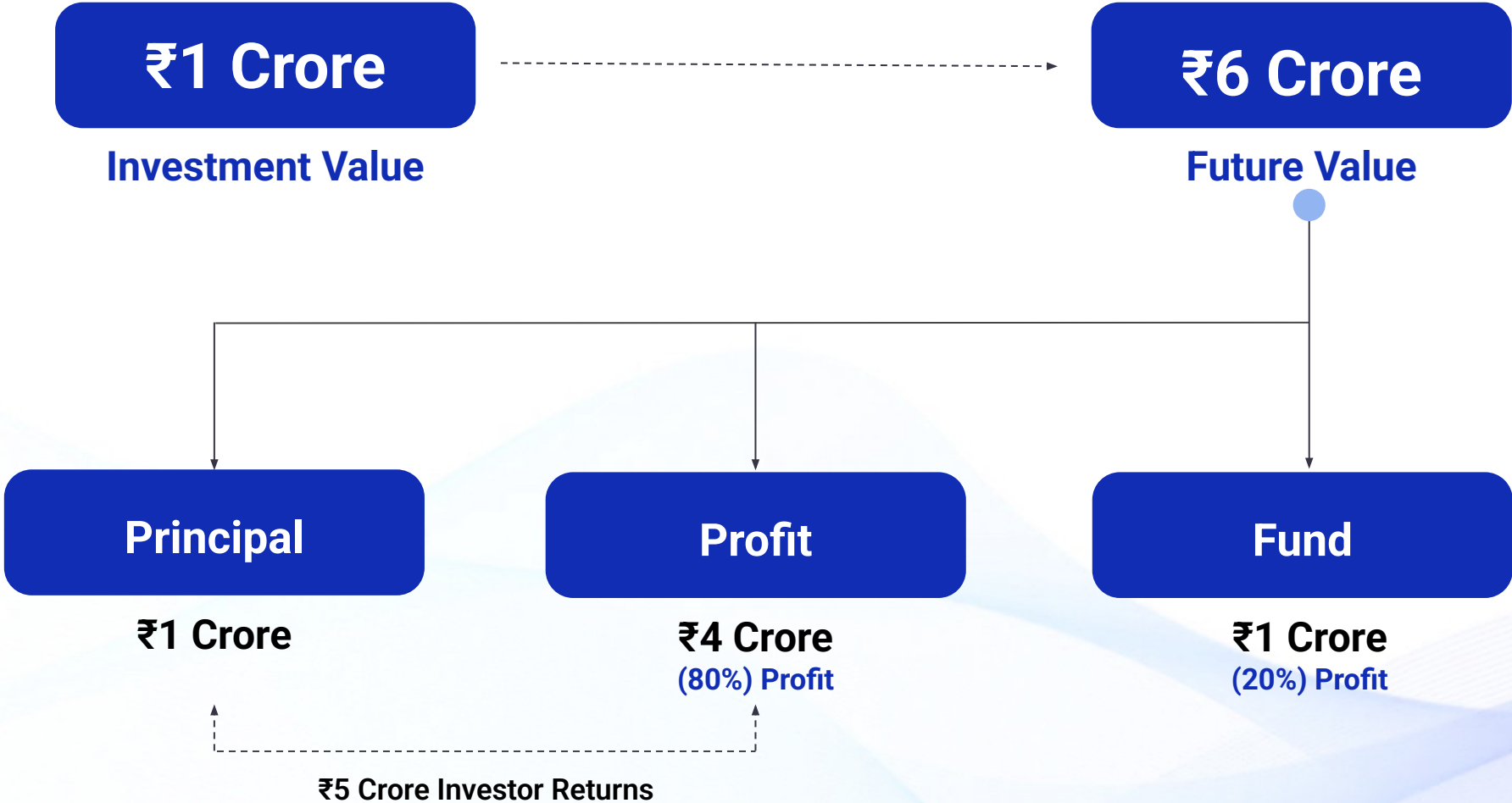
Classes Distribution

Classes	E1	E2	E3	E5	E10	E25	E50
Minimum Capital	1 Cr	2 Cr	3 Cr	5 Cr	10 Cr	25 Cr	50 Cr
Management Fees	2%	2%	2%	1.75%	1.50%	1.25%	1.00%
Setup Fees	0.50%	0.25%	0%	0%	0%	0%	0%
Opex	0.10%	0.10%	0.10%	0.10%	0.10%	0.10%	0.10%
Hurdle Rate	12%	12%	12%	12%	12%	12%	12%
Investor's Share	80%	80%	80%	80%	85%	85%	90%
Profit Sharing (Carried Interest)	20%	20%	20%	20%	15%	15%	10%
Catchup	Yes	Yes	Yes	Yes	Yes	Yes	Yes

E -Elite Investor

Distribution

Picture this: You start with an investment of ₹1 cr and it becomes ₹6 cr over the tenure of the fund. Exciting, right? Let's break it down step by step and analyze the returns for unit holders.



Distribution and Returns to Unit Holders

VentureX Fund

Picture this: You start with an investment of ₹100 and it doubles to ₹200 in just 1 year. Exciting, right? Let's break it down step by step and analyze the returns for unit holders.

All fig in ₹ Cr.

Particulars	Investor	Investment Manager
Towards 100% repayment of capital contribution for unitholders	100	
Towards hurdle rate (12%) on capital invested	12	
Towards catch up on Hurdle Rate (25%)		3
Allocation of distribution proceeds in excess of capital contributed, hurdle rate and catch-up to unit holders of each class (Carry)	68	17
Total distribution being made to unit holders of each class	80 (80%)	20 (20%)
Total distribution being made to unit holders	180	
Net Absolute Return in 1 Year	80	
CAGR Returns	80%	

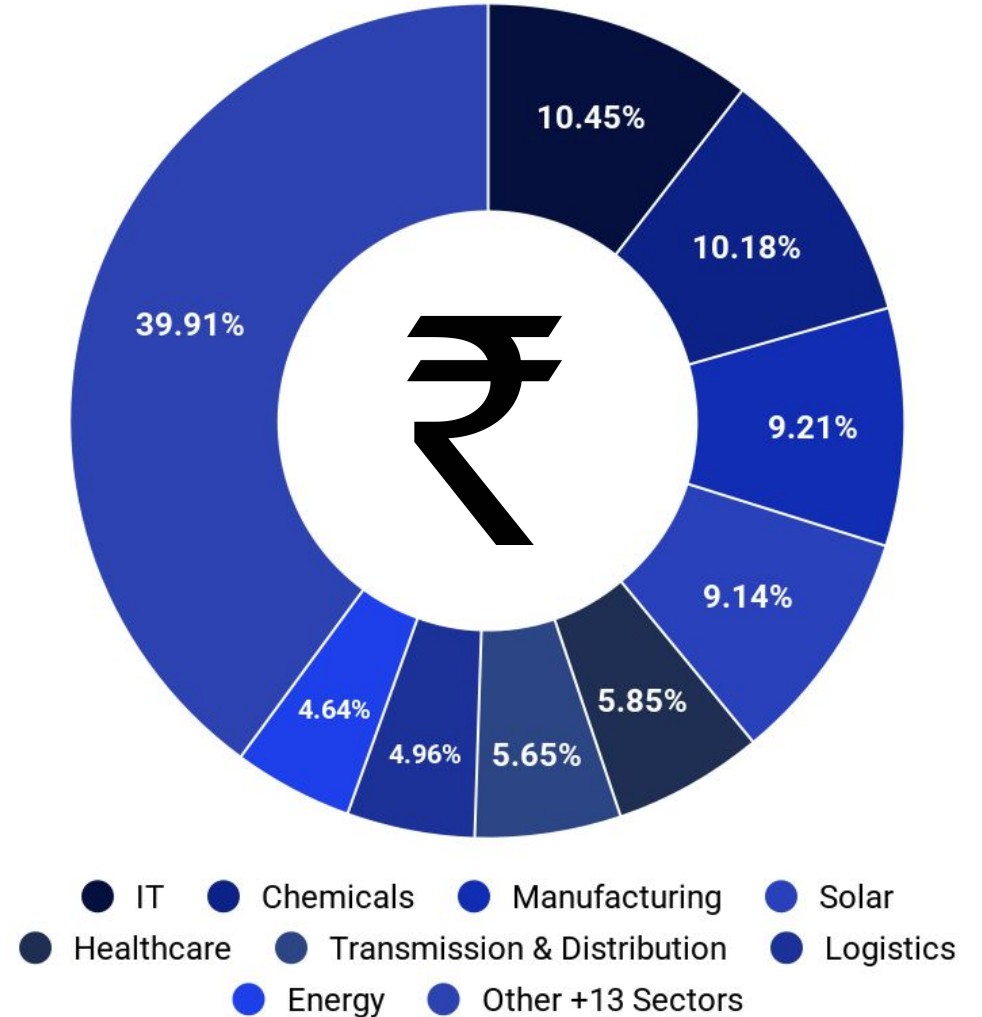
Fund Allocation

Key Information	In (₹ Cr.)
Total Commitments	195.71
Funds Received	95.02
Funds Deployed	87.04
Funds Present Value	~85.86
Investors Onboarded	183

Sectors	Allocation %	Value (₹ Cr.)
IT	10.45%	₹9.10
Chemicals	10.18%	₹8.86
Manufacturing	9.21%	₹8.02
Solar	9.14%	₹7.96
Healthcare	5.85%	₹5.09
Transmission & Distribution	5.65%	₹4.91
Logistics	4.96%	₹4.32
Energy	4.64%	₹4.04
Other +13 Sectors	39.91%	₹38.39

*up to April 2026

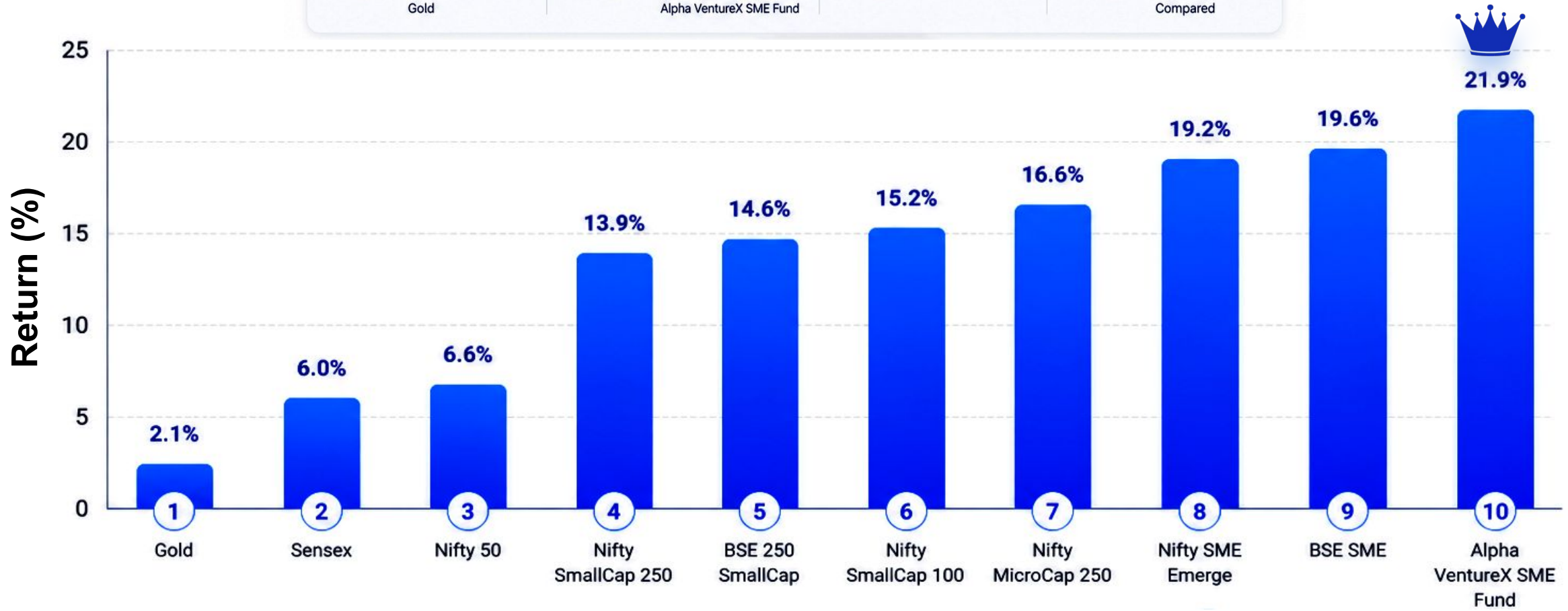
Sector Allocation



1 Month Return

Performance Across Major Indices & Funds

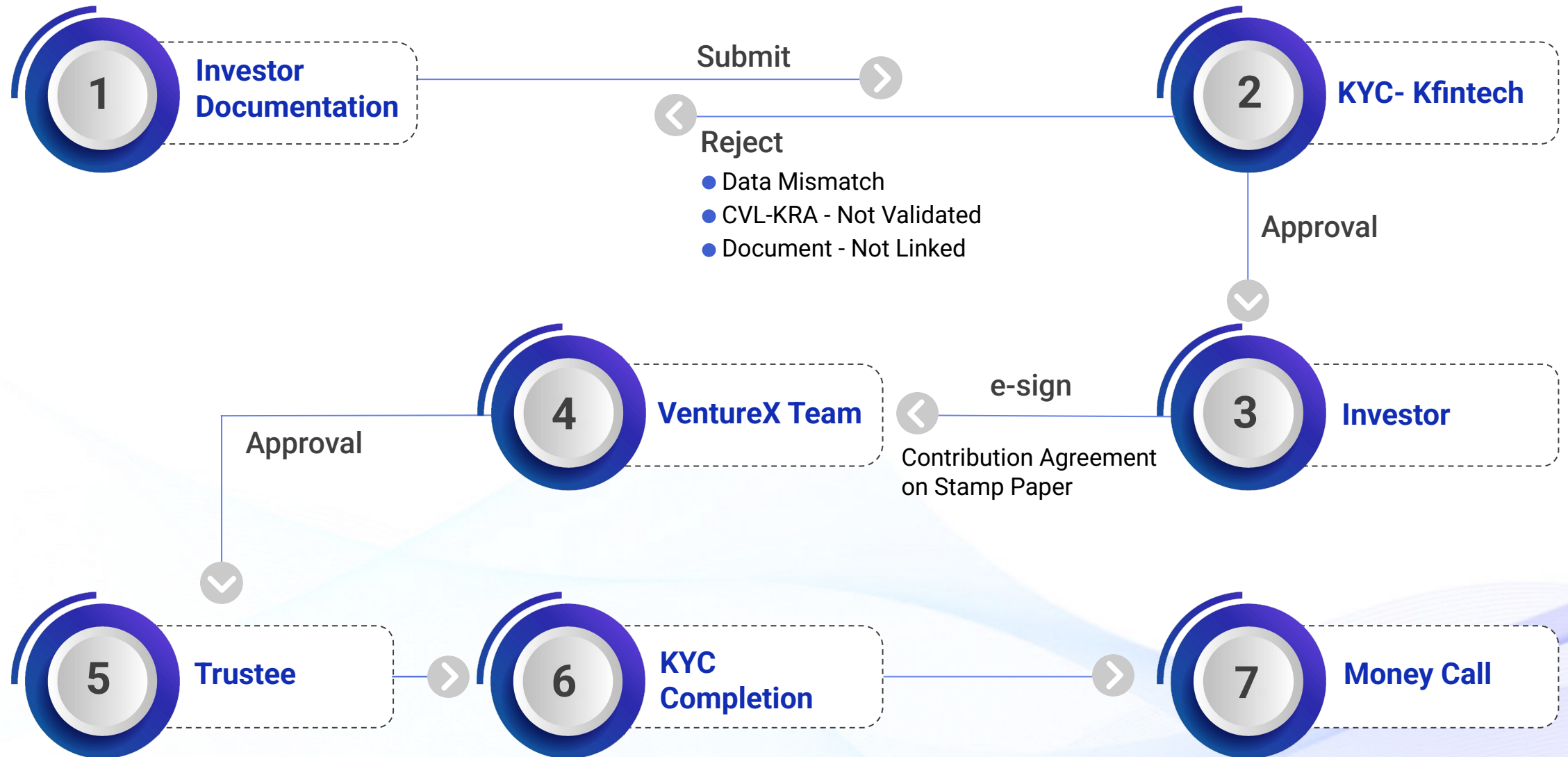
 <p>Lowest Return 2.1% Gold</p>	 <p>Highest Return 21.9% Alpha VentureX SME Fund</p>	 <p>Average Return 13.2%</p>	 <p>Indices/Funds 10 Compared</p>
---	---	--	---



April 2026 Return*

The Nifty 50 returned 6.6% in a month. Alpha VentureX SME Fund returned 21.9%. That gap is what early-stage SME access looks like.

Online Onboarding Process





Disclaimer

This presentation has been prepared and issued on the basis Of internal data, publicly available information and other sources believed to be reliable. The information contained in this document is for general purposes only and not a complete disclosure Of every material fact and terms and conditions. The information / data herein alone is not sufficient and shouldn't be used for the development or implementation Of an investment strategy. It should not be construed as investment advice to any party. All opinions, figures, charts/graphs, estimates and data included in this presentation are as on date and are subject to change without notice. While utmost care has been exercised while preparing this document, Alpha AIF (VentureX) does not warrant the completeness or accuracy of the information and disclaims all liabilities, losses and damages arising out of the use of this information. The statements contained herein may include statements of future expectations and other forward-looking statements that are based on our current views and assumptions and involve known and unknown risks and uncertainties that could cause actual results, performance or events to differ materially from those expressed or implied in such statements. Readers shall be fully responsible / liable for any decision taken on the basis Of this presentation. NO part Of this document may be duplicated in whole or in part in any form and/or redistributed Without prior written consent Of the Alpha AIF (VentureX). Readers should before investing in the Strategy/ schemes/ portfolio make their own investigation and seek appropriate professional advice. • Investments in Securities are subject to market and other risks and there is no assurance or guarantee that the objectives Of any Of the Strategy/ schemes/ portfolio will be achieved. • Clients under Alpha AIF (VentureX) are not being offered any guaranteed/assured returns. • Past performance does not indicate the future performance of any of the strategies /schemes/ portfolio. • The name of the Strategies do not in any manner indicate their prospects or return. • The Strategy/ schemes/ portfolio may not be suited to all categories of investors. • The material is based upon information that we consider reliable, but we do not represent that it is accurate or complete, and it should not be relied upon as such. • Neither Alpha AIF (VentureX), nor any person connected with it, accepts any liability arising from the use Of this material. The recipient Of this material should rely on their investigations and take their own professional advice. • Opinions, if any, expressed are our opinions as Of the date Of appearing on this material only. While we endeavour to update on a reasonable basis the information discussed in this material, there may be regulatory, compliance, or other reasons that prevent us from doing so. • Alpha AIF (VentureX) is not responsible for any loss or shortfall resulting from the operation Of the strategy /schemes/ portfolio. Source for stock write ups: Alpha AIF (VentureX) Internal Research and External Research.

Recipient shall understand that the aforementioned statements cannot disclose all the risks and characteristics. The recipient is requested to take into consideration all the risk factors including their financial condition, suitability to risk return, etc. and take professional advice before investing. As With any investment in securities, the Value Of the strategy /schemes/ portfolio. may go up or down depending on the various factors and forces affecting the capital market. Investments in securities market are subject to market risks, read all relevant documents carefully. Prospective investors and others are cautioned that any forward looking statements are not predictions and may be subject to change without notice. • For tax consequences, each investor is advised to consult his / her own professional tax advisor. • This document is not for public distribution and has been furnished solely for information and must not be reproduced or redistributed to any other person. Persons into whose possession this document may come are required to observe these restrictions. No part of this material may be duplicated in any form and/or redistributed without' Alpha AIF (VentureX)'s prior written consent. • Distribution Restrictions –This material should not be circulated in countries where restrictions exist on soliciting business from potential clients residing in such countries. Recipients of this material should inform themselves about and observe any such restrictions. Recipients shall be solely liable for any liability incurred by them in this regard and will indemnify Alpha AIF (VentureX) for any liability it may incur in this respect. The table used in the presentation are used to explain the concept and is for illustration purpose only and should not used for development or implementation of an investment strategy. Past performance may or may not be sustained in future. Investments in securities market are subject to market risks, read all relevant documents carefully. Investment in Securities is subject to market and other risks and there is no assurance or guarantee that the objectives of any of the Schemes of Alternative Investment Funds will be achieved. Please read Private Placement Memorandum of the Scheme carefully before investing.

Contact Us



Partner with us



Scan to download

Other Locations

- Mumbai
- Pune
- Chennai
- Delhi NCR
- Kolkata
- Lucknow
- Hyderabad
- Ludhiana
- Nashik

Coming Soon

- Bengaluru
- Ahmedabad
- Indore

Contact Details

- +91-95991-96107
- +91-93196-90058
- help@alphaamc.com
- www.alphaamc.com

Head Office: Plot 23, Maruti Industrial Development Area, Sector 18, Gurugram, Haryana-122015